

Customer :

customer

Customer part :

customer part

Comment :

Comment

S1=1.61

S2=2.26

Tmax=465

Tp S2=504.0

PI=0.42

HI=118

Sample =1669.10

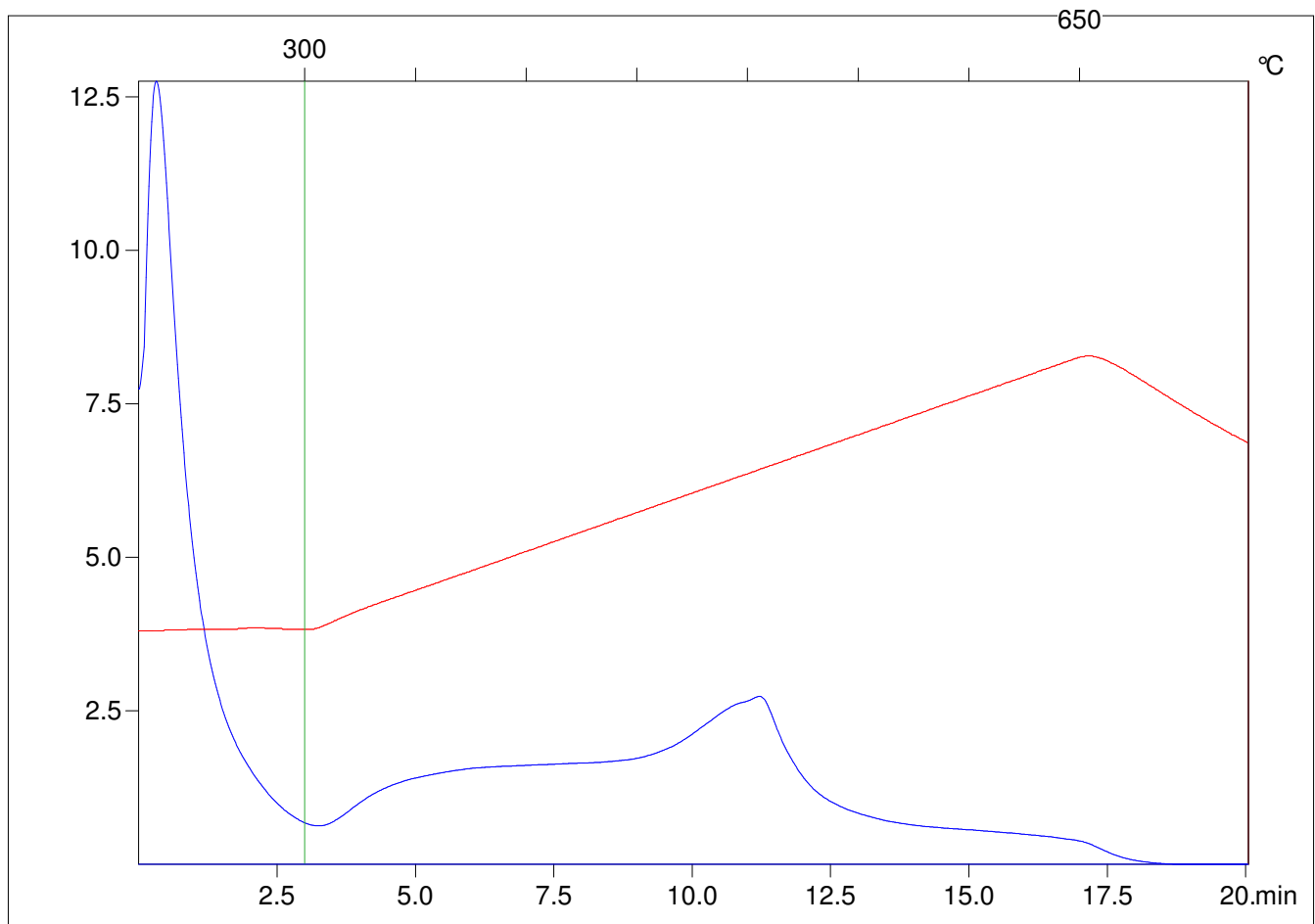
Method =Bulk Rock

Cycle=Basic

KFID(10\*9)=1444

Qty =70.7

TOC=1.92



C:\VINC\PK1\_1792\PK010.R00 : FID pyrolysis graphic

State

Pyro Status

Oxi Status